

Woolen Mill Living

Inside Highlights:

Packages	2
What to do	2
Housekeeping	3

Winter is here

Winter is by definition “the year’s coldest season”. For us here in the northern hemisphere the winter months are from around November or December to February or March. Usually when we think about winter we think skiing, sledding etc. Some of us wait for the snow and head to the mountains while some of us just bundle up, turn up the heat and wait for April.

Whether you are a winter

enthusiast or not it’s Vermont and its here. We have already experienced the shortest day of the year (December 21st) and now we all wait as each day become longer and we creep towards spring. For places such as Australia, Chile and Brazil December 21st is the longest day of the year and they spend it in the warm sunshine where the average annual temperature is 71 degrees. We did some

checking and found that the hottest temperature ever recorded in Vermont was in Vernon on July 4, 1911 and it was 105 degrees. The coldest day was in Bloomfield on December 30, 1933 and it was -50 degrees. The average annual temperature for Vermont is a whopping 46.6 degrees.

No wonder we all cherish the short summer days!

Upper Parking Lot Gate

As some of you might have noticed recently we have been slowly working towards installing a parking lot security gate in our upper lot. This gate is intended to protect our parking for our resident use only. The gate will be operational soon. In order to access the gate you will need your apartment key card. The same key card that opens your apartment door will open the gate. Upon leaving the parking lot the gate will automatically open as you approach. We will continue to have a staff

member in our parking lot during the transition period of the gate to help with any issues or questions that you may have. Please remember that this does not change our parking rules and regulation at all. The following still apply.

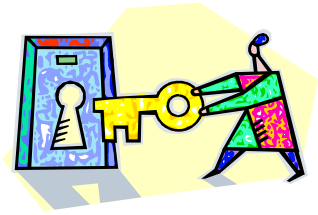
- You must have a valid Woolen Mill parking sticker displayed correctly in your windshield.
- We do not allow guest parking.
- You must have a handicap placard

displayed if parked in the handicap spot.

Please feel free to contact The Management Office if you have any questions.



Please help us keep the building secure.



Please DO NOT open secure doors for Strangers.

Be Aware of people tailgating into building.

You have a package....

In our efforts to be more efficient and more considerate of our environment we have begun emailing notices to all residents of packages received in the Management Office. This will include UPS, FEDEX etc. This will not pertain to package notices delivered by the USPS. We do hope that early notification will enable resident to pick up their packages quicker. We will continue to make

every effort to deliver any packages that we have on Friday afternoons but please remember that this is a courteous service and not guaranteed.



If you would like email notification for all your

notices including you package notices please make sure the Management Office has your current email address. If you are currently receiving paper notification and would like to continue that way we will continue to deliver notices to your apartment. Please note that any request for package delivery during the week should be on an emergency basis.



The first day of winter was December 21, 2011.



The first day of spring is March 20, 2012.



The first day of summer is June 20, 2012.

What to do....

As we say goodbye to the holidays and wait for the warmer weather to approach we thought we would take a look around to see what activities and events might be happening to help get us through the next few colder months.

There seems to be something for everyone. Local events in the greater Burlington area range from local sports, music, arts etc. We are confident there is something that might catch your eye. Here are a few of the

events we thought were interesting.

Back Country Skiing II– January 29, 2012 at Petra Cliffs Climbing Center.

Vermont Snow Sculpture Competition – February 4, 2012 at Water Front Park.

Burlington Winter Festival 2012 – February 4, 2012 at 10:00 on the Church Street Market Place.

There is always something for everyone.

If sports are your thing then you might be interested in The University of Vermont Athletics. There is Men's Basketball, Women's Basketball, and Ice Hockey. All these are right up the street and can offer the sports enthusiast a good time.

Tickets can be purchased online or over the phone.

Check them out at www.uvm.edu/~sportspr



The Woolen Mill Housekeeping Tips

Long term parking – For extended parking during winter months; please remember that Long Term parking is available in the lower parking lot. LTP is located next to the grilling area. You do need to notify The Management Office when you plan to leave your vehicle. This is crucial to the successful maintenance of the parking lots during snow storms. If your car is not reported to The Management Office it is subject to being towed.

Heat – When leaving for extended period of time (two or more days) please do not turn your heat off. Heat must be left on at least 55 degrees to avoid frozen pipes.

Parking stickers – Please make sure to check your parking stickers to ensure they are in the correct location on your windshield. Your sticker must be in the lower left hand corner of your windshield (you should see it right above your VIN) and not resting on the dashboard.

Trash bags – Please do not leave trash bags in the hall outside your apartment door. This can be unpleasant for your neighbors as well as a fire hazard.

Door mats – Door mats such as welcome mats are not permitted in the hallways. This is a fire code violation. All door mats should be placed on the inside of your apartment door.

Recyclables – Recyclables need to be brought to either the trash room on our 2nd floor or can be placed in the red dumpster located in our lower parking lot. Please do not put your cardboard etc in the trash bins.

Smoke free zone – Please remember that there is no smoking permit within 50 feet of the building. Smokers post are placed at entrances so that you may dispose of your cigarette before entering the building but please do not stand by them while you are smoking. The smoke does enter into other residents apartments.

Watch for Resident BBQ coming this summer. Food and Fun for everyone.

